

STATUS OF AGRICULTURE UNDER DEVOLVED SYSTEM OF GOVERNMENT PRESENTED TO ICPAK

**THE GOVERNMENT EXPENDITURE AND DEVOLUTION
SCORECARD CONFERENCE 2019 on 22nd November 2019
Theme: Harnessing government expenditure for sustainable
development**

**Topic: Devolution of Agriculture: Making Counties Kenya's bread
basket**

By

Council of Governors

Dr. Moses Osia Mwanje, PhD

CECM Agriculture, Livestock and Fisheries Busia County

PRESENTATION OUTLINE

- Introduction
- Key result areas
- Status of agriculture to date
- Expenditure on agriculture
- Challenges
- Recommendations

1. INTRODUCTION

- Agriculture is devolved, mandate covers:
 - primary production,
 - input supply,
 - value addition
 - agro processing,
 - product and market development, and marketing,
 - extension and infrastructure development
 - disease surveillance and control.
- Counties have made significant achievements towards the realization of **100 per cent food and nutrition security, job creation and**

2. KEY RESULT AREAS BASED ON CIDPS

- **KRA 1. Increasing primary production and productivity** through value chain development and large-scale agribusiness
- **KRA 2. Commercialization of Agriculture, Livestock and Fisheries production through Agro-processing and Value addition.**
- **KRA 3. Re-engineering Extension institutions and processes from the traditional Government Extension through outreach to Extension through Practice.**

MODELS ADOPTED BY VARIOUS COUNTIES

- We have had many programs and projects, some don't work
- Aggregation parks (dairy business parks, industrial parks)
- Specific value chain development
- Partnership with development partner and the private sector, contractual farming (sugar, tea, coffee, sorghum, cotton, milk, beef)

3.0 STATUS TO DATE

3.1 CROPS

- Mechanization of production systems evidenced by the purchase of **366 tractors** and equipping of 26 Agriculture mechanization stations offering lease services to rural farmers.
- Distribution of **over 2 Million 50-kgs** bags of subsidized fertilizer.
- Under the County subsidies arrangements, **1400** greenhouses have also been purchased and distributed to farmers in the year under review.



3.2 LIVESTOCK SECTOR

- Vaccinated over 46 Million Livestock and construction of over 500 cattle dips that has improved disease control and surveillance.
- Provision of over 1 million recorded Artificial Insemination Services to livestock farmers
- Purchased over 300 Milk coolers distributed as input subsidies to farmer's co-operatives to enhance productivity and value addition on raw products.



3.3 FISHERIES

Tilapia and Catfish Hatchery: A functional seed production capacity of 1.5 million fingerlings annually _



Fish Cage , Aqua Park and ponds



Re-engineering Extension Support: Technical staff training ongoing in specialized areas



Earthen Pond Aqua park



Leadership support



4.0 MARKET ACCESS AND VALUE ADDITION

- The idea is, “produce not only to eat but also to sell”. Where is the market before production?
- Commercialization of agriculture through construction of over 140 markets that provided direct access to markets for farmers

Fish Market: Fish Transshipment and whole sale market under construction



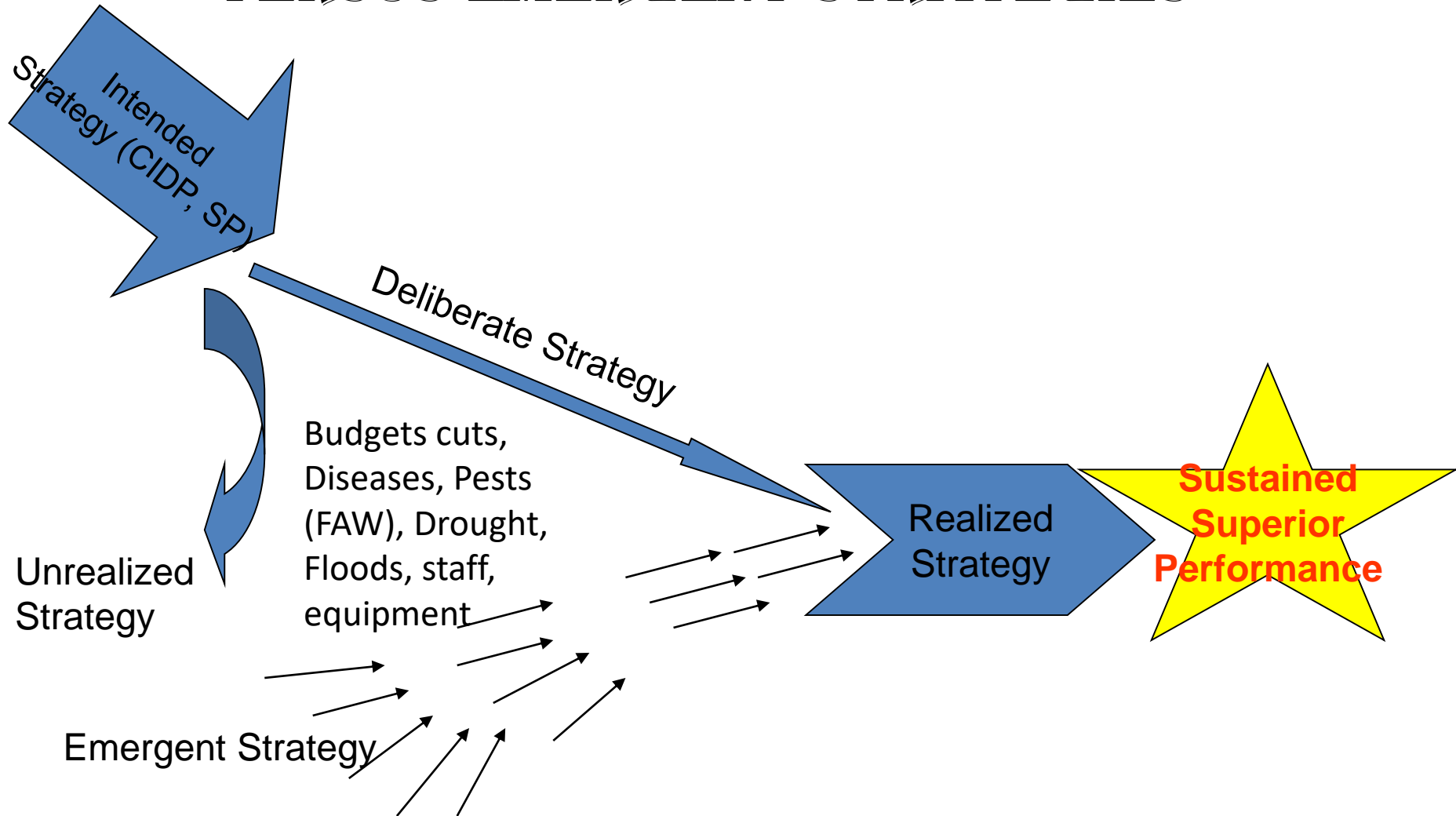
5.0 EXPENDITURE ON AGRICULTURE BY COUNTIES

- County Governments have allocated on average 6.7 % of their total budgets to the Agriculture sector.
- This is just 3% less of the 10% recommended allocation as per the Comprehensive Africa Agriculture Development Program (CAADP) Malabo declaration.
- The achievement of the 10% required or more would be realized if the devolved monies held at the Ministry of Agriculture, Livestock and Irrigation, are released to Counties.
- The Council of Governors pursues reforms to ensure the best interest of the farmers

6. POLICY DEVELOPMENT

- Robust policy and legal framework in the 47 counties
 - Crops (crop devpt, disease control, tuber crops, coffee, tea, irish potatoes, biodiversity, warehousing and receipting)
 - Fisheries (Aquaculture development, beach mgt unit,)
 - Livestock (abbatoirs, disease control, monitoring and control,)
 - Veterinary (Animal disease control)
 - NB: Nearly 40 pieces of legislation required
- Approval by the County assemblies
- Policy development is expensive

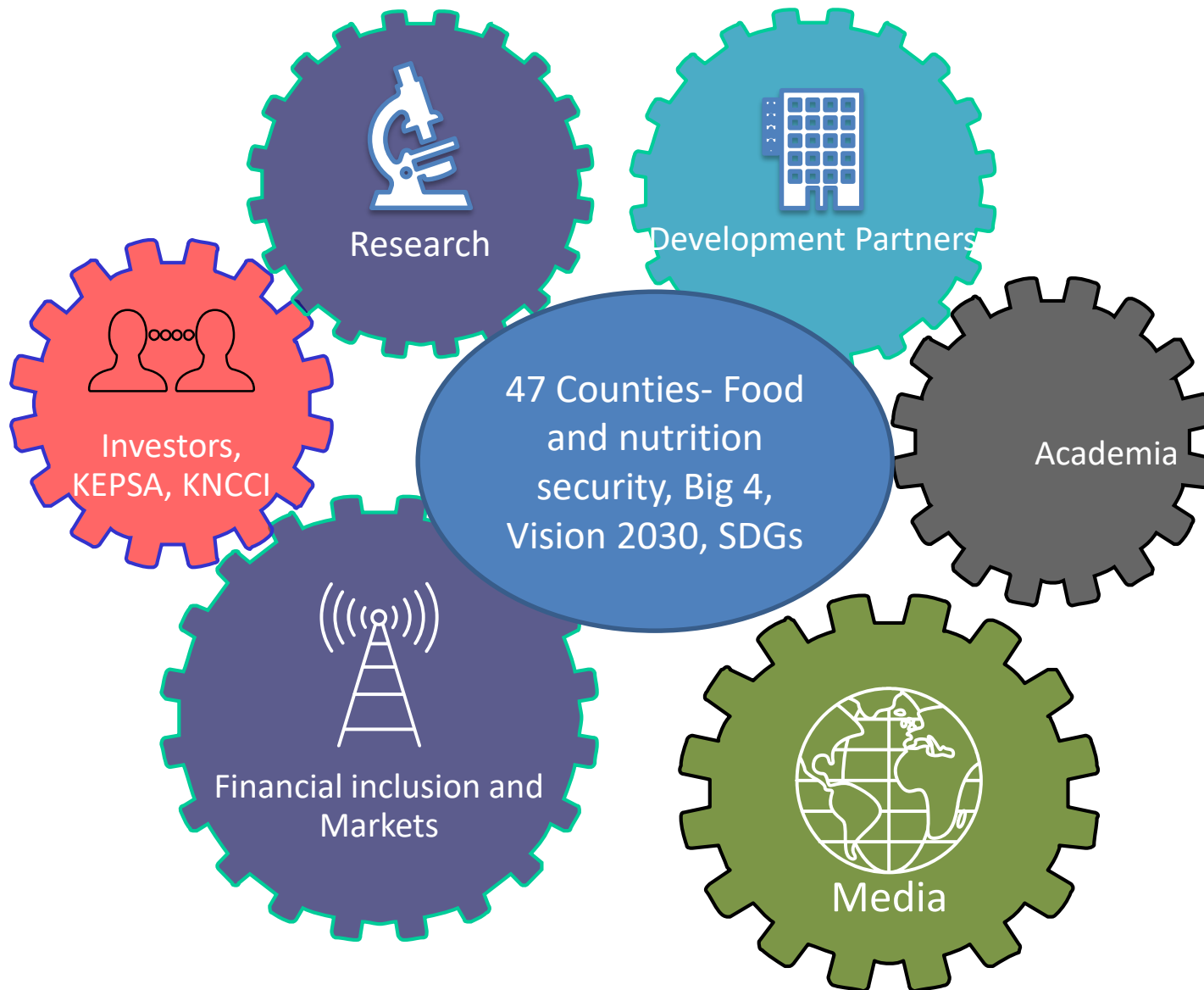
6.0 CHALLENGES AT COUNTIES DELIBERATE VERSUS EMERGENT STRATEGIES



7. RECOMMENDATIONS

- Myriad of challenges (diseases, pests, food safety)
- Focus on service delivery
- Build partnerships with development partner
- Complete development of legal frameworks to operationalize devolution (agriculture requires about 40 laws at county level)
- CAADP to realize Big 4 agenda
- Build capacity
- Financial inclusion, Youth and women

Build Partnerships-shared prosperity



THANK YOU
GOD BLESS YOU